

ONYX



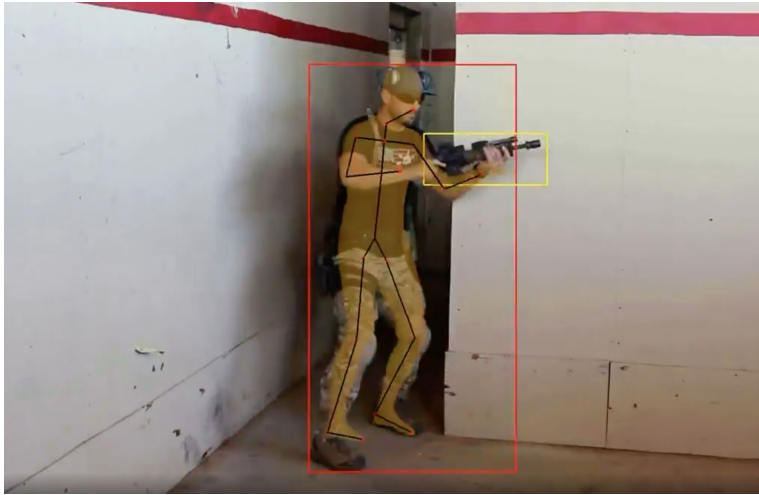
Sentry: Remote Tactical Sentry System

Keeping the operator in the loop and out of danger

Sentry is a multi-functional intelligent sentry platform designed to be a force multiplier. Designed by operators and engineers with decades of experience in the field, Sentry is an unmatched solution for the modern battlefield, providing additional set of eyes and weapon on target when you need it most. Sentry leverages a DIS (Digital Imaging System) with ATD/ATR to autonomously scan, detect, classify, track, and report any threat with fast and effective tactical action. It may be deployed in an overwatch or terrain denial position to protect friendly forces in the heat of battle.

Sentry integrates the Onyx's **X360** Pan/Tilt Gimbal, **RAW** (Remote Actuated Weapon), an AI enabled DIS, and is MANET (Mobile Adhoc Network) capable. This intelligent system is fully integrated with ATAK and leverages passive ranging to populate targets into the common operating picture. It allows the operator to assign and forget, or actively control this heavy hitting system.

onyx-ind.com/OTSS

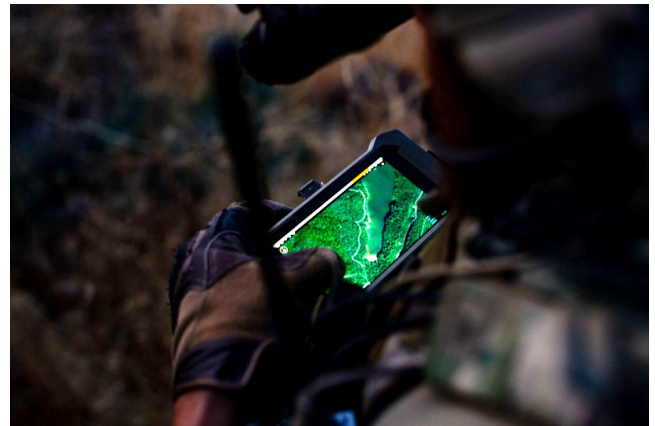


KEY FEATURES

- Remote zeroizing and fire select locking to inhibit unintended or unauthorized use
- Certification pending for safe fire select
- Autonomous sector scanning with automatic detection, recognition, tracking, and aim point selection
- Human, weapon, and vehicle detection with filtered alerts
- Control multiple sentry systems on network with an ATAK integrated user interface
- Passive ranging for populating targets on TAK map and ballistic solver aim augmentation
- Ruggedized for tough use and harsh environmental conditions using resilient, anti-corrosive materials

PRODUCT SPECIFICATIONS

/ Dimensions	15" x 4" x 2"
/ Weight	15 lbs (6.8 kg)
/ Power	DC & BA-5590, & various battery options
/ Control	Agnostic to most secure IP networks
/ Protection	Pending IP65 rating/MIL-STD-810
/ Calibers	Fielded: 5.56x45mm / 300 AAC BO Currently Testing: 7.62x51mm / 6.5mm / 9x19mm
/ Optics	Intelligent day and night sensors



Compatible with TAK suite



Tailored to mount on customer-preferred platforms



Secure wireless connection